

the home the world

June 19-21 2012



welcome

Welcome to The Home & The World 2012, a gathering place for people who are concerned about the world around them and are learning how to respond creatively to the challenges, joys, and profundity of the world. This arts summit explores both home and world - literally, existentially, symbolically, metaphorically and through many many lenses.

As a small arts organisation based in rural southwest England, we have attempted to marry the academic conference model with that of an arts festival. More than fifty artists from across the globe are presenting here - sometimes in person, but also sometimes through virtual link-ups. Through the power of the internet we will visit Hong Kong, and numerous sites across north America (and save a few carbon emissions as we do so). We are proud and delighted to host this event - in so doing sharing with you our home here at Dartington.

Since the 1920s, Dartington has been the home of new ideas, utopian modelling, great art and free thinking (and, of course, endless controversy). We hope we -- and this event -- will add to that rich history.

Please enjoy our home.

Aune Head Arts

table of contents

Welcome	2
Practical stuff, including information about meals, etc	3
Detailed information on presenters and presentations	4, 5, 8
MAIN PROGRAMME LISTING	6, 7
Artwork, installations, etc.	9
new work created specifically for THATW	9
other invited work	9
Tom Rusotti's Flux Olympiad	9
People	10
About Aune Head Arts	11
MA in Arts, Ecology, Place	11
About Arts and Ecology	11
Site Map	12

Aune Head Arts has taken all due care in the preparation of this programme and we apologise if any information is incorrect.



3

practical information

Lunch

Lunch is provided for all registered participants and you will find meal tickets in your packs

Evening Meal

People staying on the Dartington Estate will have other meals provided depending on their accommodation package

For non-residents there are two options on the Estate:

White Hart Dining Room and Bar 1800-2100 (advance booking essential)

Round House (light refreshments) 1000 - 2000

We also hope to operate a snack bar in the Garden Room in the evening

There are numerous restaurants in Totnes and the local vicinity (see www.totnesinformation.co.uk)

Transport

Recommended taxi firms are Badger Cabs 01803 840400 and Orchard Cars 01803 666732

The mainline rail station is **Totnes**, five minutes in a car, approx. 30 minutes on foot

Buses leave Dartington Hall at 0950, 1150, 1355, 1610, 1705, 1805. These buses go to Totnes town centre

What to do in an emergency: contact a steward or staff/crew member who will take appropriate action

In the event of a fire alarm, the fire muster point is the Great Lawn (see Map no. 10)

Dartington Hall is a working environment: please be aware of others using the Estate

Where to get help

You will find stewards and staff/crew around the summit hub, wearing badges

bookshop & other resources

Books and Games for sale at the CCANW bookshop (see Map no. 4)

CCANW (Centre for Contemporary Art and the Natural World) will be bringing stock from its shop to the Summit to sell to participants inbetween sessions, including books on the arts, the environment and games (cash, cards and cheques accepted). The CCANW bookshop is always a tempting delight, so do take advantage to browse and purchase books that can otherwise be hard to find.

Internet access

If you have your own laptop you can logon to the Dartington guest account, which is accessible pretty much everywhere. Create your own account. Otherwise, you can pop in to the AHA mediaspace [Map ID no. 4] when it is open and use a computer there.

Notes for presenters

If you are presenting, the AHA mediaspace (see map) is available for you to prep or to function as a green room, at times noted in the schedule. We will have available an A4 and an A3 printer. We are a Mac-based organisation, so you may need to transfer your material to a data stick before you can print. Each of the presentation sessions comprises three 30-minute presentations. **It is essential you arrive at the space in which you are presenting half an hour before the beginning of the session so that you can check your materials are online and working properly.**



detailed information.1

4

(alphabetical)

Grace Adam: Please Be Seated (presentation + installation [Map ID: GA1 - GA6])

Sit in a chair. Consider your reactions and associations. Write a postcard home and share your thoughts. Placed around the estate there will be a variety of chairs, some familiar, some not, some seemingly in context, some not. We lovingly select chairs, we inherit them, put up with them, dump them, recycle them. In some ways, they form partial portraits of us. What do we choose, and how long before our chair is unfashionable, uncomfortable, unusable?

Clive Adams: Soil Culture (see Daro Montag)

James Aldridge: The Great Turning Artful Inquiry – Exploring the Value of Collaborative Practice

The Great Turning Artful Inquiry is a global, artistic co-inquiry into the five Personal Guidelines for The Great Turning explicated by Buddhist scholar and activist Joanna Macy (www.joannamacy.net). The project accompanies the expected 2013 publication of the book *The Great Turning*, a selection of essays published by Vala Publishing Cooperative (UK). In this workshop, co-curators and artists James Aldridge, Chris Seeley and Kathy Skeritt share their own collaborative processes and invite discussion around the value of collaboration within the context of ecological arts practice.

Mary Bartlett: A homage to the Wilton Diptych

A talk about the history of Dartington using an artist's book to update a significant historical document (now in The National Gallery) belonging to Richard II whose half-brother John Holland built Dartington Hall.

Mary Bartlett: The Garden Vision of Dorothy Elmhirst and the plants of significance

A walk in the gardens at Dartington Hall to look at the ideas and vision behind the restoration of the gardens from 1925 to the on-going planning and care need to maintain this historic garden. It will also look at trees personally planted and discuss the time scales needed to create a fragile landscape that can be easily taken for granted.

Mary Bartlett: Exhibition of hand-made books (Dartington Bindery) [Map ID: 9]

The exhibition of bindings will show the documentation in visual form of decisions which change landscapes and impact on the lives of people and nature.

Katy Beinart (see Figureground)

Ruth Ben-Tovim: A Little Patch of Ground

A Little Patch of Ground is a pioneering intergenerational food growing and performance project that has taken place annually across the UK since 2009. It involves bringing together a group of strangers from across a town or neighbourhood to meet each week and grow a permaculture garden, cook and eat together and creatively explore ideas about interdependence and the earth as our shared home. It is inspired by the work of Joanna Macy and was created by Ruth Ben-Tovim and associate Anne-Marie Culhane to find a way to respond creatively to the challenges of climate change, resource depletion and social isolation. Ruth, the creative Director of Encounters who are the producers of the project will talk about A Little Patch of Ground, micro-utopias, liminality, communitas and creative processes that seek to reconstruct our world.

Jack Brown (see Figureground)

Joanna Brown: Web upon Web

An illustrated presentation on how a photographic exploration of spiders' webs has influenced the development of the social networking platform, World Wide We (www.ww.org).

Bob Budd: This building needs to be sheared [Map ID: BB]

The structural metalwork on the façade of Studio One will be clad in sheep fleeces. This piece was a commission from The Home & The World. Bob is a visual artist / sculptor based in Exeter.

Emma Bush: Place is learning us (presentation) & Estate Walk [walk]

Patience and *Ella* are Emma Bush and Mary Loveday Edwards whose ongoing research looks at place, memory and inscription. The practice is concerned with the way things relate to, meet and touch one another. We will discuss our investigation of places and how we find ourselves there: our approach, our looking, our breathing. Is there a difference between observation and observance? Acts of observation as a method for coming closer to place and developing attention to our internal and external environment. Deliberately low-key and non-spectacular. Allowing things to be seen and heard in an amplified yet discreet way. Join us in a walk around the place.

Annalisa Cantoni: In England [Map ID: AC]

"In England" is a collection of interviews with people who live in vehicles and caravans in and around Totnes. I was interested to hear the stories of these communities that are so often misrepresented in the press. The way we make home is individual to all of us, but it also shares a common sense of home. Presenting short snapshots of individuals and their homes, the film seeks out glimpses of this commonality we share.

Beth Carruthers: Subtle Actions of the heart

Love of place, love of home, can be a complex thing, especially in contested territories when coupled with colonialism in its recent and contemporary forms. The Pacific coast of Canada holds the last of the world's intact temperate rainforest and coastal habitat, as well as traditional cultures that have dwelt with and in this place for millennia. From the rich cultural heritage of the indigenous First Nations of coastal British Columbia, to the dominant Euro-settler culture, this presentation and conversation considers the role of the arts in nurturing and navigating place-relations at a time of ecological risk and crisis – a crisis no less cultural than ecological – and the role of deep aesthetic engagement in cultural-ontological change. The looming threat of the Enbridge pipeline carrying Tar Sands bituminous crude for shipping through these most dangerous and pristine waters in the world makes this conversation especially important now.

Nathan Coley: We must cultivate our garden [Map ID NC]

Nathan Coley is a contemporary British installation artist, who was nominated for the Turner Prize in 2007. Coley examines how the values of a society are reflected in, and determined by, its built environment, addressing concerns such as the importance of place, the social value of architecture and the meaning and relevance of contemporary monuments.

David Crouch: Home, Space & Feeling: journeys and creativity in art and in living

A Professor of Cultural Geography and exhibiting artist, my paper seeks to engage ideas of doing art and doing everyday life, and how belonging has much to do with the feeling of space; our life journeys, reactivating memory across spacetimes, and moments of creativity.

Paula Crutchlow/Helen Varley Jamieson: make-shift

make-shift is an intimate and unique networked performance and discussion event that re-imagines the private actions of our domestic lives as multiple, interconnected and with global consequences. The event takes place simultaneously in two ordinary houses connected through an online interface, accessible at www.make-shift.net to anyone around the world with internet access.

Susan Deakin: A visit to the home of millions [walk]

Participants will walk down the main drive, enter an adjoining field and continue downhill to a line of large oaks beside the river. We will gather under one of these, the largest and probably oldest, where discussion and discovery can take place. The oak is one of the oldest colonisers of our land; of the vast numbers of organisms that live in close relationship with this tree and of the interdependence of so many of them; how it is threatened by diseases, development, and fear of claims against falling limbs.

Susan Deakin also talks about her exploration of the English Oak in its many guises, and about the work she has installed here during the summit.

Susan Deakin: Contemplation Drawing - 431 years [Map No 3]

This drawing evolved from a year spent learning something about oak trees and focussing on one in particular. Wanting to create a corporeal presence of this tree in order to try and understand it better, I constructed a rectangular frame around its trunk. This gave me a datum from which to measure at 10 centimetre intervals, distances to the trunk's outside surface where it emerged from the ground. These were transferred to paper, the outline joined up and the tannin wash applied.

Mary Loveday Edwards (see Emma Bush)

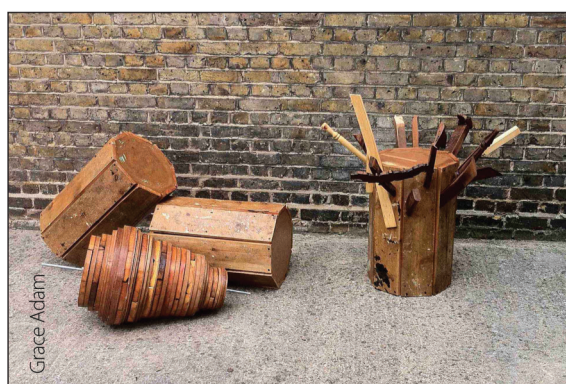
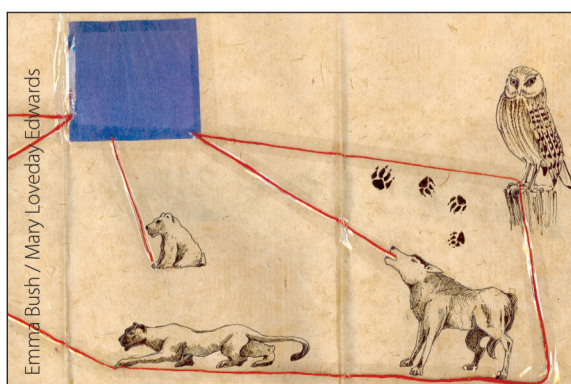
Natalia Ernstman: Re-imagining home - narratives of place, audio and walking as starting points for community dialogue

Navigating home and the world, we all use a different map that represents the way we see a place, its past, present and future. Dialogues around possible and desirable futures start with making all these maps visible. Walking connects the static past with the intangible future, through a mobile presence. Through an audiowalk you will be presented with my recent work in a Cornish village, where I used narratives of place and walking to unearth different meanings of sustainability and making the concept tangible in the surrounding landscape. These narratives were then juxtaposed in an audiopiece, creating a palimpsest of maps, which served as the starting point for a wider community dialogue.

Gareth Evans: Towards Re-Enchantment: place, culture and belonging

The Re-Enchantment (2008 – 2011) was a national arts project that sought to interrogate the various meanings of 'place' in the twenty-first century. It aimed to deliver an imaginative response through art, live performance, film and writing to 'that most neglected of human emotions, a sense of place' – Sir Neil Cussons, former CEO English Heritage. Artervents commissioned a number of major artists and writers to explore the significance of our various relationships to place – whether personal or collective, cultural, ecological or spiritual. The artists have all demonstrated a significant, empathetic and enduring engagement with place as a primary element of their work.

Gareth Evans presents: Patience (After Sebald)



A richly textured essay film on landscape, art, history, life and loss, *Patience (After Sebald)* offers a unique exploration of the work of internationally acclaimed writer W.G. Max Sebald (1944 – 2001) via a walk through East Anglia tracking his most influential book, *The Rings of Saturn*. The much anticipated new feature by the Grierson Award-winning Director of Joy Division, *Patience* is the first film about Sebald internationally, marking ten years since the writer's untimely death, and with contributions from major writers, artists and film-makers including Tacita Dean, William Firebrace, Dan Gretton, Barbara Hui, Arthur Lubow, Robert Macfarlane, Christopher MacLehose, Jeremy Millar, Katie Mitchell, Rick Moody, Sir Andrew Motion, Lise Patt, Chris Petit, Adam Phillips, Michael Silverblatt, W.G. Sebald, Iain Sinclair, Bill Swainson, Marina Warner, Christopher Woodward. Readings by Jonathan Pryce; Original Soundtrack by The Caretaker (www.brainwashed.com/vvm)

Figureground: past present and future

Figureground is a development agency for artists in the public realm. From organising day-long residencies in cities across the south east to commissioning twenty artists to commandeer a lightship off the coast of Kent, Figureground will be sharing their working processes and outlining why the future of public art lies in collaboration and active creative dialogue.

Figureground: Work with me - a process lab for creative problem solving

The Figureground team will be available to help you work through creative problems, questions and dialogues by employing different creative techniques to re view the issue from numerous angles.

Cathy Fitzgerald: The ecocidal eye: beyond the anthropocentric to a relational gaze in cinema

Currently undertaking an artistic PhD enquiry in practice and theory through the National College of Art & Design in Dublin, Ireland, New Zealander Cathy Fitzgerald is attempting to characterise the conventions of the ecocidal anthropocentric (human centered) gaze in cinema and consider a more relational gaze, one that aspires to a more ecocentric perspective. Her own experimental film work is framed by her focus on undertaking a slow-art, long term transformation of her small monoculture conifer plantation, in which she lives in rural Ireland, to a permanent biodiverse forest. She pays close attention to what the forest, made up of a myriad of living communities of which she is part, needs in order to survive and thrive.

Ana Flores: Poetry of the Wild [Map ID: AF]

Poetry of the Wild (POW) is a participatory environmental art project connecting people to landscape by combining poetry, visual art and nature observation. The POW project was designed by Ana Flores, an ecological designer and sculptor. Ana has toured nationally in the United States with this unique project since 2003. This is the first time the project has been presented outside the US.

Hondartza Fraga: Mars was a Place

Hondartza's work revolves around notions of distance, home, journey, the unknown and the familiar. In this presentation she will use her drawing and video work as a backdrop to reflect upon the meaning of home and elsewhere and what it may mean to be lost in-between. Home rests in an indeterminate 'somewhere' between extreme landscapes. Exploring the relationship between deep ocean and deep space as they represent unknown, unreachable landscapes with strong potential to stimulate our imagination fantasy, she will be reflecting upon our relationship with these two environments and the structures we build to help us understand them as places to be inhabited, even if only through fantasy or fiction.

Josie Gould: Life is a journey not a destination

Tillhouse Farm in East Devon is to be developed as the new town Cranbrook bringing new homes, communities and growth yet also displacement, chaos and disruption for the land, farmers, animals and local community. Josie Gould's process led art practice uses materials and camera as performative body, exploring transitions in universal energies found in light and material when journeying through farms. Experiencing these transitions reveals our embodied place in the world to be fluid, poetic and mysterious yet also one involving loss, danger, the undesirable and unexpected. Our bodies and the natural world might be seen as vulnerable homes where we are sensually, emotively immersed in matter and light, both affecting and affected by chaotic life processes continually and often messily interweaving, dissolving, changing and transforming.

Linda Gordon: Here and There

Here and There is a live online interaction with USA devised and facilitated by Linda Gordon in collaboration with American artist, Carol Maurer. Two outdoor labyrinths are walked simultaneously – one here at Dartington and one at the Delaware Art Museum, Wilmington, DE. The events will be filmed on video and transmitted live between the two venues.

After an initial introduction from both sides of the Atlantic, you are invited to watch or walk the labyrinth in the Dartington garden, or step inside (Studio Two) to view the Delaware labyrinth on the large screen. At the end, we will come indoors for a brief closing ritual where there will be an opportunity to share any thoughts that may have emerged during the walking experience.

David Haley: Hong Kong: Home from Home - Destiny, Fate, and Transdisciplinarity

Live from the Kai Tak River, Hong Kong, David Haley will report on his ecological arts project, *Life Support System: Towards 2048, Beyond 2097*, to consider the irony that by 2048, the Hong Kong Special Administrative Region will pass completely to the mainland Government at about the same time as the 'reclaimed land' of one of the world's most densely populated, and busiest financial trading centres is 'reclaimed' by the ocean. There is, however, the potential to re-invent this urban form as an integrated whole system metabolism.

David Harding: KEYNOTE The Good, the Bad and the not so very good.

David Harding OBE, artist and teacher, has executed numerous social and public art works and lectured widely on public and socio/political art in the UK, France, Germany, Sweden, USA, Australia, New Zealand since the 1960s and most recently, at the Universities of Gothenberg and London Metropolitan, in the Toyota Museum of Contemporary Art, Japan, Tramway and CCA Glasgow and Chelsea College of Art.

He worked in art education in Nigeria from 1963 to 67. He was appointed Town Artist of Glenrothes, Fife in 1968 and worked with planners, architects and civil engineers for ten years there while developing the role of the artist as planner. He was senior lecturer in Art and Social Contexts at Dartington College of Arts in Devon 1978-85. In 1985 he was appointed Head of the new Environmental Art Course at Glasgow School of Art, and Head of Sculpture and Environmental Art from 1996-2001. [www.davidharding.net]

Rebecca Harris: House, our corner of the world

A place to retreat and set forth, house is our home; it is the corner of our world. The house as home will be explored as a 'collage' of images, texts, music and videos, and focus on the precarious and transitory nature of this architectural building we call home.

Sue Harrison: Encounter [Map ID: SH]

Sue Harrison has made a portable 'hide' which provides temporary shelter and camouflage whilst enabling sustained observation of the landscape. Being made from hand-felted fleece it is 'of' the landscape as well as in it. Come and try it out and find how it reveals your inner landscape as you consider your 'point of view'.

Sue Hill: KEYNOTE

Sue is a visual artist and theatre maker, core member of WildWorks and member of the Creative Team at the Eden Project. She has worked with many companies including Welfare State International, Emergency Exit Arts, Walk the Plank Theatre Ship, and the Royal National Theatre. In 1988 she joined Kneehigh, Cornwall's international theatre company, serving on their management team from 1994 – 2001 and helping to grow their distinctive style of theatre. She was also involved in originating several festivals that have now become part of Cornwall's calendar – Golowan, City of Lights and the lantern procession on Tom Bawcock's Eve.

From 2000 until 2006 she was Artistic Director for the Eden Project, developing their innovative interpretation strategy, commissioning artists, writers and performers to illuminate Eden's ideas and messages. She now works on strategy and projects with Eden, most recently developing a Peace Park with a community in Kosovo, and as part of a team working with the Seychelles Government helping to devise their Sustainability Strategy. She also made the recycle fairy on top of Eden's Christmas tree!

Her special area of interest is the role of culture and art in building, healing and sustaining communities. Sue was born and educated in Cornwall and now lives in Redruth. [www.wildworks.biz]

Jane Hodgson: Mental Pictures of a physical world - where are you now?

"How Are You Today..." explores tiny slices of the world in 5 different locations, at exactly the same time, on a February morning in 2005. Since 2000 I have been immersed in a time/space, body/mind dialogue with my sister who travelled by boat to our nearest land based antipode, New Zealand. Where was she? What was she up to as I slept? What was I up to when she slept? What is happening elsewhere, anywhere, as I go about my day? It is part of my ongoing research interest in events happening simultaneously in various antipodes, exact opposites in the world as if one passed a knitting needle through the centre of the earth. The book title "Somewhere, someone is doing something" (Yasmine Yim and Jari Lager) sums up my curiosity. Yet it is obvious, of course; always, someone is doing something, somewhere; yet how do we relate to that in terms of where we are living? Where do we live? Do we live physically or mentally? Where am I at home? In my mind which is continually flipping here and everywhere, or where I sit, now as I write this.

Jane Hodgson: How are you today? 27 February 2005? [Map No. 3]

This is a reduced version of the full installation, showing only three of the original five locations.

Jackie Juno OUTSPOKEN! Stand-up poetry show

Jackie Juno is a locally-sourced free range organic poet and Grand Bard of Exeter, delivering wonderfully witty wordage and perfectly poignant poetry about love, health, home, nature, money, death, sex and Betterware. Jackie casts her perceptive gaze over Life on Earth as we know it, and our place in the Grand Scheme of Things; but is also unafraid to tackle such subjects as reasonably-priced home improvement products. Never one to follow convention, Jackie draws upon her lifetime of wayward experiences to bring you a dynamic, hilarious and joyful stand-up poetry show. Matt Harvey (Radio 4) says of her: "Jackie is warm and witty, frank and feisty, but above all, very very funny."

Laura Luck (see Figureground)

continues on page 8



Tuesday June 19

1200 - 2100	Accommodation check-in	Dartington Hall Welcome Centre
1200 - 1400	Tea/Coffee available	Garden Room
1200 - 1800	Summit Registration	Studio One Foyer
1200 - 1345	Presenter prep	AHA mediaspace
1400 - 1425	Welcome	Studio One
1430 - 1530	KEYNOTE: Helen Marriage	Studio One
	Studio One (Chair: Richard Povall)	Studio Six (Chair: Joanna Brown)
1540 - 1610	Maria Michails: Human-Powered Art	Sue Thomas Your Home in Cyberspace
1610 - 1640	Beth Carruthers: Subtle Actions of the Heart <i>live session from Vancouver</i>	Tricha Passes The Strange Case of Neil Jenney
1640 - 1710	David Haley Hong Kong: Home from Home - Destiny, Fate, and Transdisciplinarity <i>live session from Hong Kong</i>	Paul O'Brien: Aesthetics, Ethics and Nature
1710 - 1730	Introduction to the Flux Olympiad	Studio One
1730 - 1750	Pete Ward A Bundle of Sticks as an instrument of consciousness	Studio One
1750 - 1830	Meet & Greet / Reception (you will find a ticket for one glass of wine in your pack)	Garden Room
1830 - 2000	DINNER (details on arrival)	
1900 - 2300	Flux Olympiad	Tennis Court
2000 - 2130	Werner Herzog's <i>Cave of Forgotten Dreams</i> (paid entry)	Barn Cinema
1830 - 2300	Bar open	Garden Room
2100 - 0800	Tony Whitehead: <i>Sit and Listen</i> by the River Dart Summit participants are invited to join sonic artist / naturalist Tony Whitehead to sit in silence by the River Dart. Come and go as you wish, join me for an hour, stay all night, greet the dawn..	Pick up a map in Studio One foyer
2100 - 0600	A Silence. Part of the Festival of Transition (culminates in dawn ceremony). Be silent to dream a new world awake. www.festivaloftransition.net/experiments/30	Self-initiated and unguided activity wherever you may be

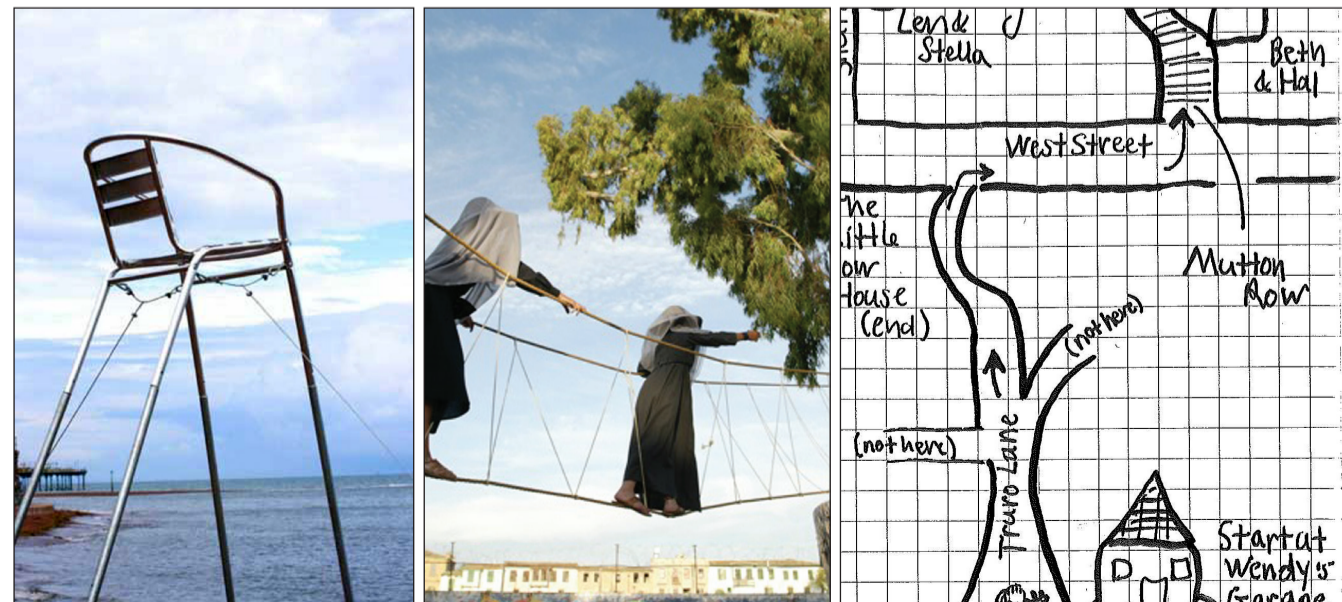


Andrea Luka Zimmerman

Alex Murdin

Sue Hill

Natalia Ernstman



Wednesday June 20

0600 - 0700	Transition Town Totnes: Dream a new world
0900 - 1130	Presenter prep / green room
0900 - 1100	Summit Registration
1000 - 1100	KEYNOTE: Sue Hill
1100 - 1130	BREAK (Tea/Coffee)
	Studio One (Chair: Alex Murdin)
1130 - 1200	Rebecca Harris Our Corner of the World
1200 - 1230	Cathy Fitzgerald The Ecocidal Eye
1230 - 1300	Judy Parrott Walking the Bridge
1130 - 1300	WALK: Susan Deakin A visit to t
1330 - 1430	Presenter Prep / Green Room in A
1300 - 1430	LUNCH (White Hart Dining Room)
	Studio One
1430 - 1630	Presentation/WORKSHOP: Figureground Work with me - a process lab for creative problem-solving
1430 - 1630	WALK/WORKSHOP: Pete Ward
1430 - 1630	WORKSHOP: Richenda Macgregor
1630 - 1700	BREAK (tea/coffee)
1710 - 1745	PLENARY
1830 - 2000	DINNER (see details on page 3)
1900 - 2300	Bar open
1900 - 2300	Flux Olympiad: see page 9
2000 - 2130	FILM: Patience (After Sebald) a feature film Commissioned by Artevents for the Town (see Gareth Evans).
2130 - 2230	PERFORMANCE: Jackie Juno Our poetry show

Thursday June 21

World awake (see page 9)	Tiltyard
	AHA Mediaspace
	Studio One Foyer
	Studio One
	Garden Room
Studio Two (Chair: Richard Povall)	Studio Six (Chair: Mark Leahy)
Andrea Luka Zimmerman Homeland (In)Securities	Gareth Evans Towards Re-enchantment
Estalita Ernstman Studio walk / presentation) Re-imagining home	Jane Hodgson Mental pictures of a physical world
Mary Bartlett Homage to The Wilton Diptych	Grace Adam Please Be Seated
The home of millions (meet in Garden Room)	
AHA Mediaspace	
n)	
Studio Two (chair: RP)	Studio Six
Performance viewing/ Interaction: Paula Crutchlow and Helen Varley Amieson.	WORKSHOP: Aldridge/ Seeley/Skerritt The Great Turning Artful Enquiry
Take-shift live session from Rhode Island. Followed by audience/performance discussion across both sites. [NOTE runs until 1700]	
A Bundle of Sticks 1 (meet in Garden Room)	
Gloria Clay-winning (meet in Garden Room)	
	Garden Room
	Studio One
	Garden Room
	Tennis Court
Feature film by Grant Gee. Towards Re-enchantment project	Studio One
UTSPOKEN, a stand-up	Garden Room

0900 - 1000	Presenter prep / green room		AHA Mediaspace
0900 - 1000	Summit Registration		Studio One Foyer
1000 - 1100	KEYNOTE: David Harding The Good, the Bad, and the not so very good: has the commissioning and production of public art gone too far?		Studio One
1100 - 1130	BREAK (Tea/Coffee)		Garden Room
	Studio One (Chair: Richard Povall)	Studio Two (Chair: Daro Montag)	Studio Six (Chair: Clive Adams)
1130 - 1200	Alex Murdin: The impossible gaze of the ecological subject	Ruth Ben-Tovim A Little Patch of Ground	Emma Bush / Mary Loveday Edwards Place is learning us
1200 - 1230	Joanna Brown Web upon Web	Simon Park Exploring the invisible	David Crouch Home, Space and Feeling: journeys and creativity in art and in living
1230 - 1300	Josie Gould Life is a journey, not a destination	Hondartza Fraga Mars was a Place (presented via video and Skype™)	Susan Deakin An artist's talk
1300 - 1430	LUNCH (White Hart Dining Room)		
	Studio One	Studio Two	Studio Six
1430 - 1630	WORKSHOP/Presentation Clive Adams/Daro Montag Soil Culture Charlotte Rathbone Tasting the Place (Soil tasting bar) Pete Ward Painting the Earth	Participatory Performance Linda Gordon Labyrinth with live linkup with Wilmington DE (USA)	1430 - 1530 WORKSHOP Kate Walters Gazing, listening and drawing with plants 1530 - 1630 WORKSHOP: Roland Playle New Eyes for Seeing
1430 - 1630	Walk: Emma Bush & Mary Loveday Edwards Estate Walk		Garden Room
1430 - 1630	Garden Walk: Mary Bartlett The Garden Vision of Dorothy Elmhirst and the plants of significance		Garden Room
1630 - 1700	BREAK (Tea/Coffee)		Garden Room
1630 - 1700	Informal discussion about a network for artists and others working in response to place and the natural world. Hosted by Clive Adams and Richard Povall		AHA mediaspace
1700 - 1745	Plenary and wrap-up		Studio One

For more information about installations/exhibitions taking place throughout the summit, please see page 9.

the programme

Events in **green** are limited numbers only and REQUIRE ADVANCE BOOKING; book online (www.thehomeandtheworld.info) or on sheets in the main registration area.

Events in **BLUE** are live feeds from other sites.

detailed information.2 (alphabetical)

8

Helen Marriage: KEYNOTE

Helen Marriage is a co-director of Artichoke, which she founded with Nicky Webb in 2005. Her previous work has included a seven-year period as Director of the Salisbury Festival which she transformed from a local affair to what The Times described as a 'miracle of modern British culture'.

Helen went to Salisbury after creating the first Arts & Events programme for the developers of Canary Wharf in London. Prior to that she was an Associate Director of the London International Festival of Theatre. She began her working life with Artsadmin where she managed a variety of independent artists in the early 1980s.

Maria Michails: Human-powered art

Maria Michails uses bicycle parts to create beautifully crafted mechanisms that entice users to physically interact with the machine to generate electricity, activating the environment around them. The mechanisms are the entry point into installations that link energy to resources in crisis. Maria is interested in providing an embodied understanding of the resources we use through an aesthetic experience. She will present *Emergy* and *The Handcar Projects*, two works that link the multi-layered issues of energy production with water and topsoil.

Richenda Macgregor: Clay winning on the Dartington Estate - retelling the story of clay

It is important for us to begin to investigate our heritage and to discover or rediscover the materials that are left unused on our doorstep. So much of the raw materials artists and craftspeople use has travelled unnecessarily or has been mined in atrocious working conditions. We re-empower ourselves when we change our working practice to include local materials harvested sustainably and begin to produce work indigenous to the environment and place we live in. Richenda offer a presentation/workshop exploring clay from the Dartington Estate.

Daro Montag: Soil Culture

The presentation draws attention to the importance of soil as a site within which home is grounded. It will serve as an introduction to next year's programme at CCANW, entitled *Soil Culture*.

Alex Murdin: The impossible gaze of the ecological subject

Most of us at some point have wanted to be in two places at the same time. How many of us though have ever wanted to not be in two places at once? This presentation describes some aesthetic and political responses to the idea of the "impossible gaze", wishing to be simultaneously present and absent in the landscape. It discusses ethical ambivalence to environmental issues via the work of contemporary political thinkers such as Slavoj Žižek, and Alain Badiou. Alex Murdin is an artist, producer and researcher working at University College Falmouth as part of the RANE group and is a Trustee of Aune Head Arts.

Alex Murdin: Submergency - Crazywell FM [Map ID: AM]

A new design for a personal and portable lifeguard's chair which can be used to provide voluntary supervision in the context of wild or outdoor swimming. Fitted with an FM transmitter the chair also narrowcasts on various subjects, including information on lifesaving skills, as well as relaxing whale song.

Paul O'Brien: Aesthetics, Ethics and Nature

Why are baby seals more valued than baby rats? Is it because they are cuter? Should we apply the same standards to humans? If not, why not? Can war, or pollution, or evil, be beautiful? Does nature have rights, and if so what are their limits? This presentation looks at some of the tensions that arise in the interface between ethics, aesthetics, politics and the environment.

Judith Parrott: Identity and sense of place

Judith Parrott expresses connection to place as the five sensory inputs from our environment; of touch, sounds, visuals, tastes and smells, which mirror back to us where we are, what we identify with, our culture and therefore who we are. In this presentation, Judith takes us on a journey through some of the locations of her artist residencies and shows images produced as part of her series, *Place Matters*, including photographs from Australia, Bolivia, China, Canada, Scotland and Antarctica. She talks of how a Sense of Place is part of a two-way relationship between person and place, and relates the journey in the context of her personal experience as a migrant to Australia from her home country of Scotland. Judith talks of the possible consequences of displacement, the importance of belonging and what she perceives to be A Sense of Place.

Simon Park: Exploring the invisible [Studio Two, Thursday only]

Light attracts and engages the curious. Where there is no sunlight, living organisms can create their own natural light in the form of bioluminescence. Amongst this group of life forms, bioluminescent bacteria produce a particularly captivating form of light, and one of a refined and beguiling blue-green wavelength. The installation features living cultures of the bioluminescent bacterium *photobacterium phosphoreum* and visitors are invited to explore the light produced by these bacteria in a darkened room, and to spontaneously interact with the bacteria in their own personal manner. It is hoped that the installation will become a place for natural communion with bacteria, a group of misunderstood organisms that represent the most important and dominant form of life on earth today.

Tricha Passes: The strange case of Neil Jenney

Neil Jenney's work presents a number of intriguing problems. How might artwork that is engaged with an environmental awareness utilize a traditional medium such as painting as an aesthetic weapon in raising

consciousness in the face of global warming? At a moment when participatory works are receiving much attention for their groundbreaking incorporation of new technology and collective agendas, Why is it that Neil Jenney persists on reinvigorating painting as a tool in these all important debates? This presentation focusses on Jenney's significance as an artist in the midst of challenges to 'traditional' media. Drawing on personal interviews with Jenney from 2007, I will unpack key ideas implicit in his work and embed them within a cultural framework that harks back to David Henry Thoreau.

Arabella Pio: Transcendental Homelessness [outside mediaspace; Map No 4]

Transcendental Homelessness is a project that questions the meaning of the expression "feeling at home" and explores how we try to recreate that feeling throughout our lives. I've been carrying my "portable" room with me around Cornwall, looking for a new sense of home in a foreign country. The many encounters, conversations, memories, stories, days and nights shared with the people I've met on my journey have given birth to a new set of insights, and challenged my and others' idea of what "feeling at home" really means.

Roland Playle: New Eyes for Seeing

This session is an interactive process helping participants enter a Goethean mode of perception by engaging those present in a live inquiry, for the ideas mentioned here cannot be sufficiently comprehended without an experience of them. Participants will be offered an exercise that facilitates the sort of perception shift mentioned above, enabling reflection on individual and collective relationships to the natural and social world. Contemporary practical applications of Goethean approaches to environmental, social and sustainability contexts from around the world will also be presented, however it is the experiences of participants that will serve as the basis for further discussion.

Charlotte Rathbone: Tasting the Place

Soil-tasting workshop (part of *Soil Culture*)

Tom Russotti (Flux Olympiad)

See 'Art events' on page 9.

Chris Seeley (see James Aldridge)

Kathy Skerritt (see James Aldridge)

Sue Thomas: Your home in cyberspace

We'll talk about making yourself at home online. Do you feel comfortable in Facebook? Or would you rather design a place in *Second Life*? Or maybe just build yourself a *home* page? Sue Thomas is writing a book about technophilia – the love of nature in cyberspace. *FarmVille*, anyone? www.technophilia.com

Kate Walters: Gazing, listening and drawing with plants

Kate will give a short presentation about her work which is fundamental to her way of glimpsing hidden worlds. We will then work outside, gazing with plants and make drawings/written responses to our experiences.

Pete Ward: Seeing the world through a bundle of sticks

As an emerging ecological art practice *A BUNDLE OF STICKS* has provided a wealth of practical and imaginative insight into our immanent condition and creative potential to respond. Founded in a respect for indigenous culture and a structural appropriation of more contemporary art practice, Peter invites you to share in the project's evolution through a combination of conceptual introduction, active engagement and subsequent reflection.

Presentation: A brief introduction to the conceptual, metaphorical and ecological implications of the project and workshop. **Please bring a stick to share.**

Workshop: An artist-led workshop to explore the practical, metaphorical, conceptual and ecological implications of gathering and binding sticks through reflection and creative response..

Tony Whitehead: Sit and listen by the River Dart

Sonic artist and naturalist Tony Whitehead invites summit participants to join him in a quiet and contemplative sit by the River Dart. Come along for an hour or for the entire night. Maps can be picked up at the Summit Registration desk (Studio One Foyer) or downloaded from the website.

Andrea Luka Zimmerman: Homeland (In)Securities

Homeland (In)Securities will be a journey through my current projects which explore the cultures of representation and, within them, methods of production that link us to place and history, focusing on those stories that are unseen, unheard, and officially 'forgotten', in a trilogy of works – site specific photography, bookwork, documentary feature – exploring the life of an East London estate.



Commissioned Work

Bob Budd: This Building Needs to be Sheared [Map ID: BB]
Annalisa Cantoni: In England (a film installation) [Map ID: AC]

Other artwork (see detailed info on previous pages)

Alex Murdin: Submergency: Crazywell FM [Map ID: AM]
Ana Flores: Poetry of the Wild [Map ID: AF]
Arabella Pio: Transcendental Homelessness [Map no. 4]
Patience (After Sebald) [film] [Wednesday 20:00, Studio One]
Grace Adam: Please Be Seated [Map ID: GA1-GA6]
Jane Hodgson: How are you today, 27 February 2005?* [Map no. 3]
Sue Harrison: Encounter [Map ID: SH]
Susan Deakin: Oak Primer [Map no. 1]
Susan Deakin: Contemplation Drawing - 431 years* [Map no. 3]
Dartington Bindery: hand-made books [Map No: 9]
An exhibition of hand-made books inspired by Dartington / Devon.
Tuesday: 12:00 - 14:00; Wednesday: 13:00 - 14:30; Thursday 13:00 - 14:30
Simon Park: Exploring the invisible [Studio Two]
An exhibition of bioluminescence
Thursday only 11:30 - 17:00

* limited hours - information posted at entrance to Studio Six

Workshops & Walks (see detailed information above for more information)

Pete Ward: Introduction to A Bundle of Sticks	Studio One, Tues 17:20-17:50
Pete Ward: The World (part of A Bundle of Sticks)	meet in Garden Room, Wed 14:30-16:30
Susan Deakin: A visit to the home of millions (walk)	meet in Garden Room, Wed 11:30-13:00
Figureground: Work with me	Studio One, Wed 14:30 - 15:30
Roland Playle: New Eyes for Seeing	Studio Six, Wed 15:30 - 16:30
Richenda Macgregor: Clay Winning	meet in Garden Room, Wed 14:30-16:30
Figureground: Work with me	Studio One, Wed 14:30 - 15:30
Aldridge/Skerritt/Seely : The Great Turning Artful Inquiry	Studio Two, Wed 14:30 - 15:30
Linda Gordon: Labyrinth	Studio Two, Thurs 14:30 - 16:30
Kate Walters: Gazing, listening and drawing with plants	Studio Six, Thurs 14:30 - 16:30
Ana Flores: Poetry of the wild	AHA mediaspace, Thurs 14:30 - 16:30
Mary Bartlett: Garden walk	meet in Garden Room, Thurs 14:30 - 16:30
Bush / Loveday Edwards: Estate walk	meet in Garden Room, Thurs 14:30 - 16:30

Flux Olympiad (plus info on 'Games People Play')

The Flux-Olympiad was first conceived by George Macunias in the 1960s but never realised. It's a series of games, team games, and races that all have been created by Fluxus artists - all trying to invert or subvert the traditional notion of a competitive sporting event. So whether it's the Stilt Soccer events where contestants are asked to attempt an almost impossible goal of playing soccer on stilts, or the flipper race where people run down the track with flippers on... all end up having a comical presence that plays with the performative aspects of sports.

Details are still to be confirmed, but games are likely to include **Flux Bocce, Laundry Badminton, Mini Track, Inferno Court, Mercury, The Hole in the Wall Game, Megasoccer** and other art sport games.

Other Events

Sit and Listen by the River Dart (overnight or drop-in between 2100 and 0800)

Summit participants are invited to join sonic artist / naturalist Tony Whitehead to sit in silence by the River Dart. Come and go as you wish: join in for an hour... stay all night... greet the dawn. A rare opportunity to embrace the river, the night and the silence. Maps will be available at the main reception desk in the Studio One Foyer, explaining how the evening works. You'll need warm clothes, good shoes, and a torch.

Dreaming the new world awake

A simple ceremony of silence and sharing to mark the opening of the Earth Summit in Rio, and a contribution to the worldwide Festival of Transition. The ceremony will be co-ordinated by Ruth Potts and Rob Hopkins (Transition Town Totnes). Sunrise is at approx. 5am but will be a little later in the Tiltyard. The ceremony will begin at 6am. (Those who wish can join a shared silence beginning at 2000hr the previous night.) *Produced in association with Transition Town Totnes.* www.festivaloftransition.net/24-hours-of-possibility

Film: Werner Herzog's Cave of Forgotten Dreams:

Part of the Dartington Film Series. Admission is £7.75 (£6.50 concessions). Please arrive in plenty of time to purchase your tickets.

Installation: Richard Povall's Secret Songs

Taking place throughout the summit, a sound installation around the Dartington Gardens (part of Aune Head Arts' tuningworlds project. See tuningworlds.net for more information). Pick up a map in the Studio One Foyer or at Main Reception. Operates in daylight hours only and is dependent on weather conditions.

Related Events

Carol Ballenger: One endless garden (see www.artslive.org.uk/uk/news/index.htm)

An exhibition of images by Carol Ballenger from her new book of photographs celebrating Dartington's gardens, fields and woods. Open June 19 to July 16 daily, 0900-1730 in Studio Five. **THATW participants are invited to join the reception on Thursday 1830 - 2030 in the Garden Room.**

Games People Play at CCANW (for further details and directions see www.ccanw.co.uk)

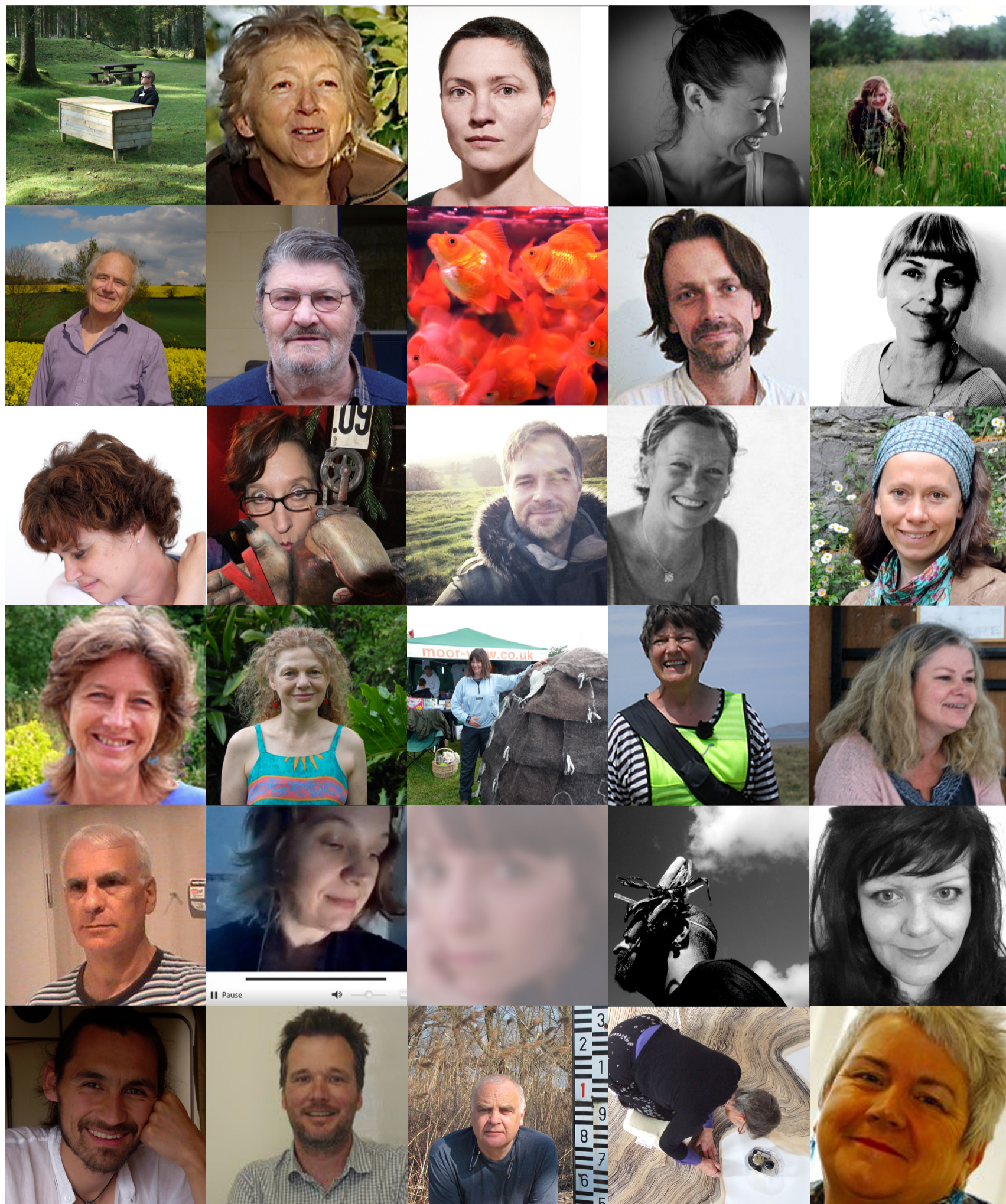
Games hold a mirror to civilization; they build bonds, trust and strengthen social relationships. For the Cultural Olympiad, the Centre for Contemporary Art and the Natural World is exploring what games can tell us about 'human nature'; and how a deeper understanding of the advantages of cooperation can help us all to address the needs of the planet at this time.

The exhibitions are presented in two halves. The first, currently on show has a selection of remarkable early board games which were intended as guides to moral improvement or general knowledge and documentation of unusual local games, past and present. The second half, starting in October, will focus on photography and video by contemporary artists which use sporting imagery to make some wider comment on life today, and on the new generation of video games designed to address social and environmental challenges.

As a supporting partner of the Summit, CCANW is contributing participatory events to the summit led by Tom Russotti of the Institute for Aesthetics. The Institute, based in NYC, is dedicated to playing sports as artistic practice. After the Summit, on Sunday 24 June from noon - 4pm Tom will be at CCANW in Haldon Forest to orchestrate more activities including a Slow Bicycle Race and Forest Football.



people



an Arts & Ecology network?

While you're here, we want to ask you a question. Over the years there have been various funded and unfunded networks set up to foster communication between artists making work about place and the natural world. Some of them have been very successful, but foundered when the funding ran out; others have never really got off the ground. So, we would like to ask you, as people very much engaged in this kind of work, what you think. Do we need a network? If so, is it a real network that meets from time to time? Is it a virtual network with an explicit aim of fostering discussion and debate? Is it a place simply to share information? Is anything needed at all -- if not, how do we improve and foster practice? Join Clive Adams of the Centre for Contemporary Art and the Natural World and Richard Povall of Aune Head Arts in an informal discussion on the topic on Thursday at 1630 in the AHA mediaspace.

a proposed MA Arts, Ecology, Place

When Dartington College of Arts was still based at Dartington it was home to the highly-regarded MA in Arts & Ecology, first established in 2003 by Alan Boldon, it was then led and re-shaped by Richard Povall in its final two years, until 2008. When DCA merged with and relocated to University College Falmouth, however, the MA was discontinued. Aune Head Arts believes there is still a hunger for such an advanced course and is currently in discussion with a university in the southwest to validate a new MA in Arts, Ecology, Place that will once again be based at Dartington. The award will be led by AHA and embedded into its work. Links will be maintained with Schumacher College, other arts activity on the Dartington Estate, and with the validating host institution. We hope to launch the MA in 2013 and in the meantime we would very much welcome your thoughts and ideas. Please contact AHA by emailing richard@auneheadarts.org.uk.

about AHA

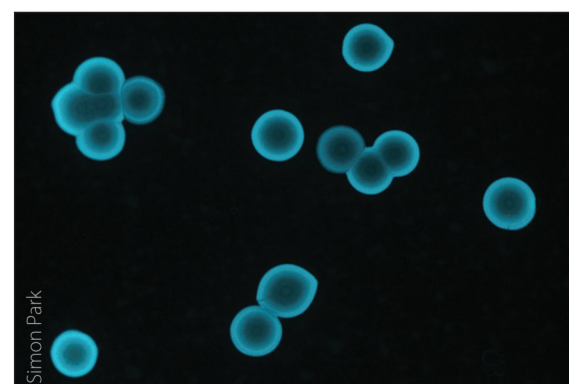
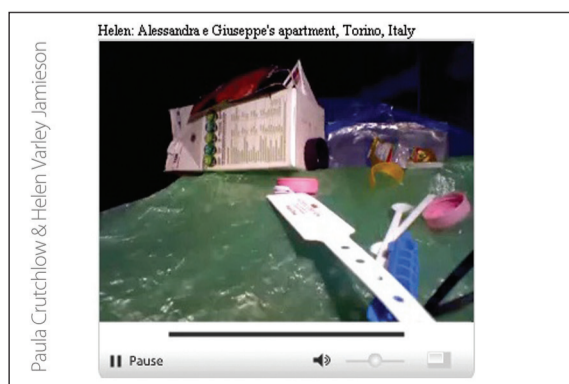
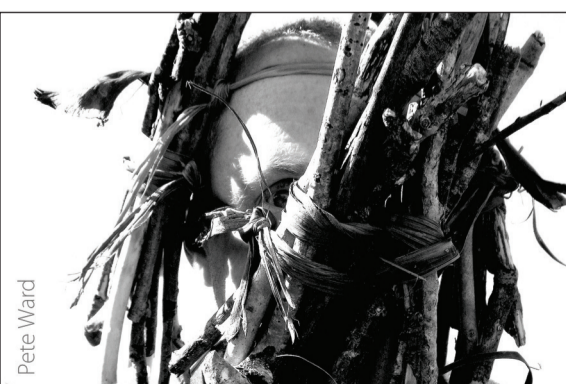
Aune Head Arts was established in 1997 with a simple mission: to use the arts to record and to celebrate the people and places within Dartmoor National Park. This simple mission has grown in all kinds of ways, but its heart remains: we are still passionately concerned with the rural and we keep contemporary arts at the core of what we do.

In the past fourteen years we have grown in size, outreach, ambition and reputation. We have done this by working with all kinds of partners from many different sectors, and by expanding our reach into other parts of the UK. We have reached well over 250,000 people as audiences or participants. We work with professional and non-professional artists, and we work with all kinds of people on all kinds of projects. Find out more at www.auneheadarts.org.uk.

aune
head
arts

a few thank yous

to all of you, for being here and participating
to our hosts, the Arts at Dartington and the Dartington Hall Trust
to our wonderful wonderful volunteers
to the tireless efforts of the Aune Head Arts staff
to the Organising Committee and their support and enthusiasm for the project



where things are...



Illustration: James Stewart www.jamesstewartart.com

- | | | |
|--|---|--|
| 1 Studio One / Registration (Foyer) | 10 Great Lawn (fire muster point) | NC Nathan Coley: We must cultivate our garden |
| 2 Studio Two | AF Ana Flores: Poetry of the Wild | |
| 3 Studio Six | BB Bob Budd: This Building Needs to be Sheared | |
| 4 Garden Room / Tennis Court / AHA mediaspace | AC Annalisa Cantoni: In England | |
| 5 Higher Close (accommodation) | LG Linda Gordon: Labyrinth | |
| 6 Accommodation Reception + Courtyard | GA1 Grace Adams: Please be seated | GA2 GA3 GA4 GA5 GA6 |
| 7 White Hart Bar and Dining Room | AM Alex Murdin: Submergency - Crazywell FM | |
| 8 Round House Café | SH Sue Harrison: Encounter | |
| 9 Dartington Bindery | | |

The Home & The World is produced by Aune Head Arts

with support from the Centre for Contemporary Art and the Natural World, The Arts at Dartington, and RANE at University College Falmouth.

Aune Head Arts is a Registered Charity, No.1141626 and is registered in England & Wales as a Company Limited by Guarantee No. 03478530.
Registered Office: Dartington Space, Dartington Hall, Totnes, Devon TQ9 6EN tel: 01374 72046 email: info@auneheadarts.org.uk.

Find us a www.auneheadarts.org.uk | facebook.com/auneheadarts | [twitter.com @auneheadarts](https://twitter.com/auneheadarts)